



孕龍科技股份有限公司
ZeroPlus Technology Co., Ltd.

SPECIFICATION

MODEL: B11004-LAP-BDM-M

PART NO: _____

VERSION: **V1.00**

Approver		Check	Design
GM	PM		

Customer Confirm

* Please fax the file to
ZeroPlus Technology after
signing .

2F, NO.123, Jian Ba Rd,
Chung Ho City, Taipei Hsian, R.O.C.

Tel:+886-2-66202225
Fax:+886-2-22234362



Content

1	Software Register.....	3
2	User Interface	6
3	Operating Instructions	9

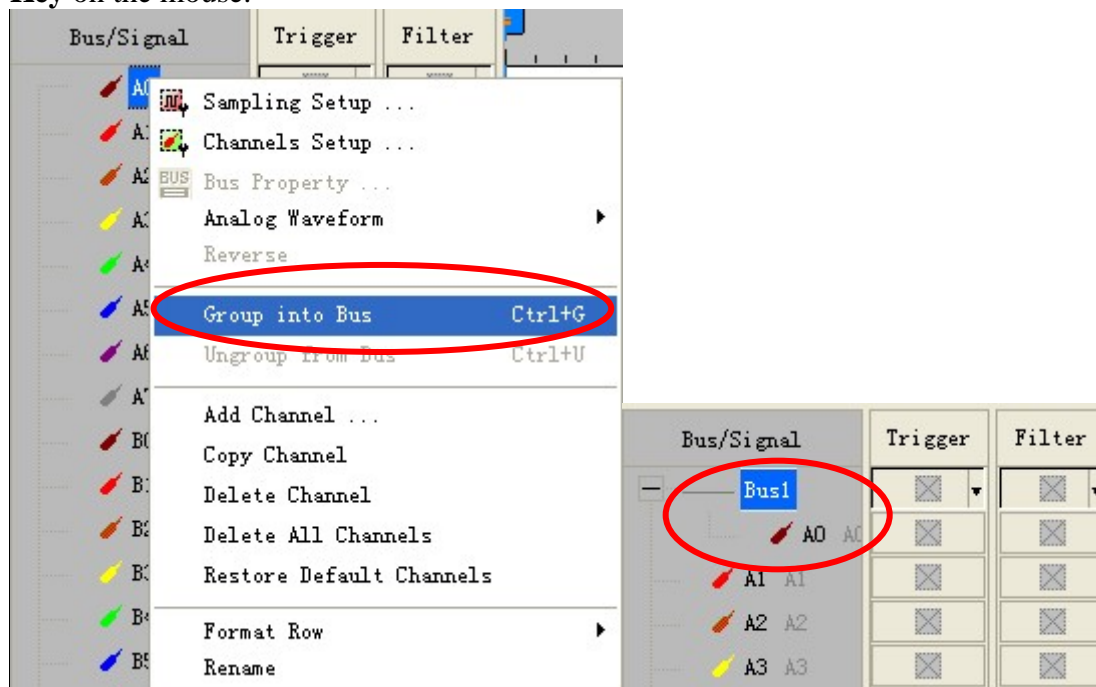
1 Software Register

Please register the software as the following steps:

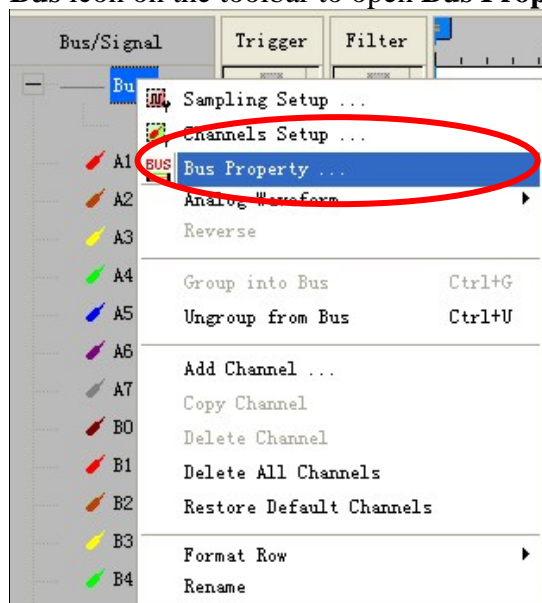
※ Remark1: The registration steps for all protocol analyzers are the same; you can complete the registration by following procedures. Following is an example on how to register the Protocol Analyzer BUS.

※ Remark2: We won't have additional notice for you, when there is any modification of the module specification. If there is some unconformity caused by the module version upgrade, users should take the module software as the standard.

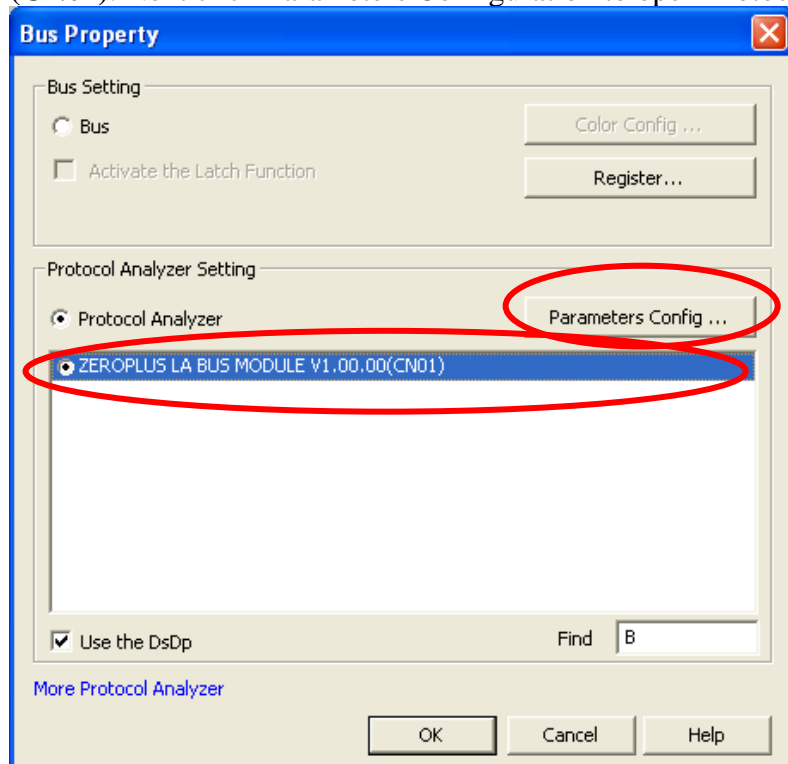
STEP 1. Open the Logic Analyzer and group the unanalyzed channels into **Bus1** by pressing the **Right Key** on the mouse.



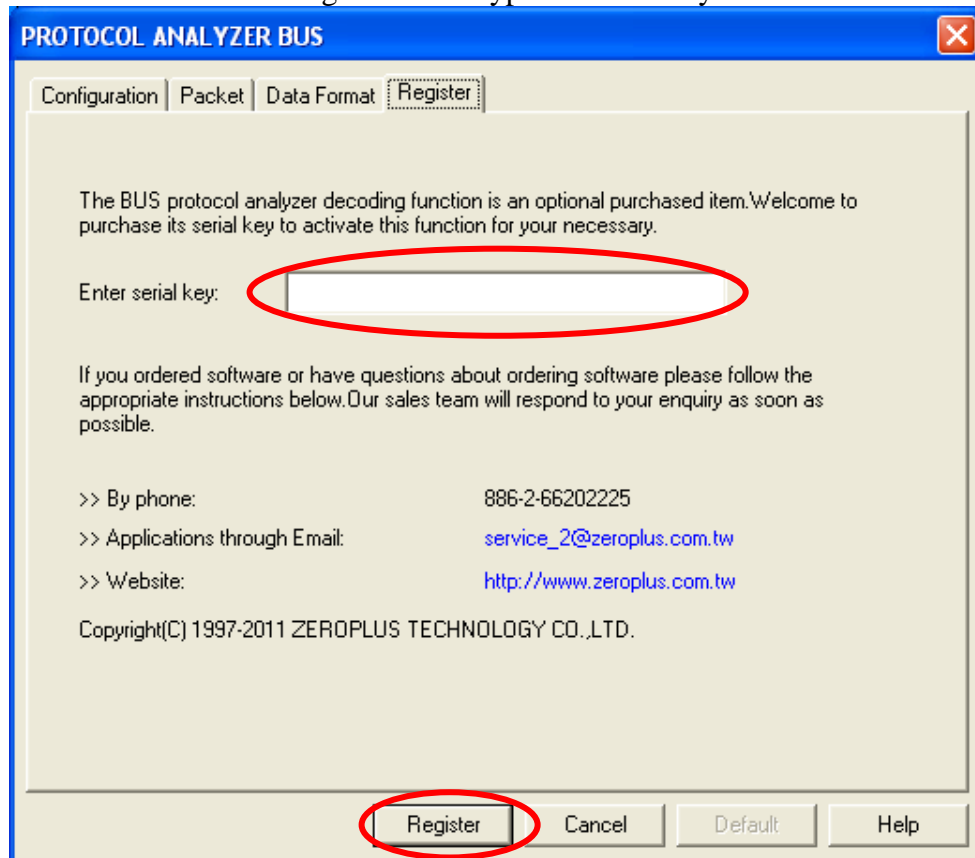
STEP 2. Select **Bus 1**, then press **Right Key** on the mouse to list the menu, then press **Bus Property** or **Bus** icon on the toolbar to open **Bus Property** dialog box.



STEP 3. Select the Protocol Analyzer, and then choose **ZEROPLUS LA BUS MODULE V1.00.00 (CN01)**. Next click Parameters Configuration to open Protocol Analyzer Bus dialog box.

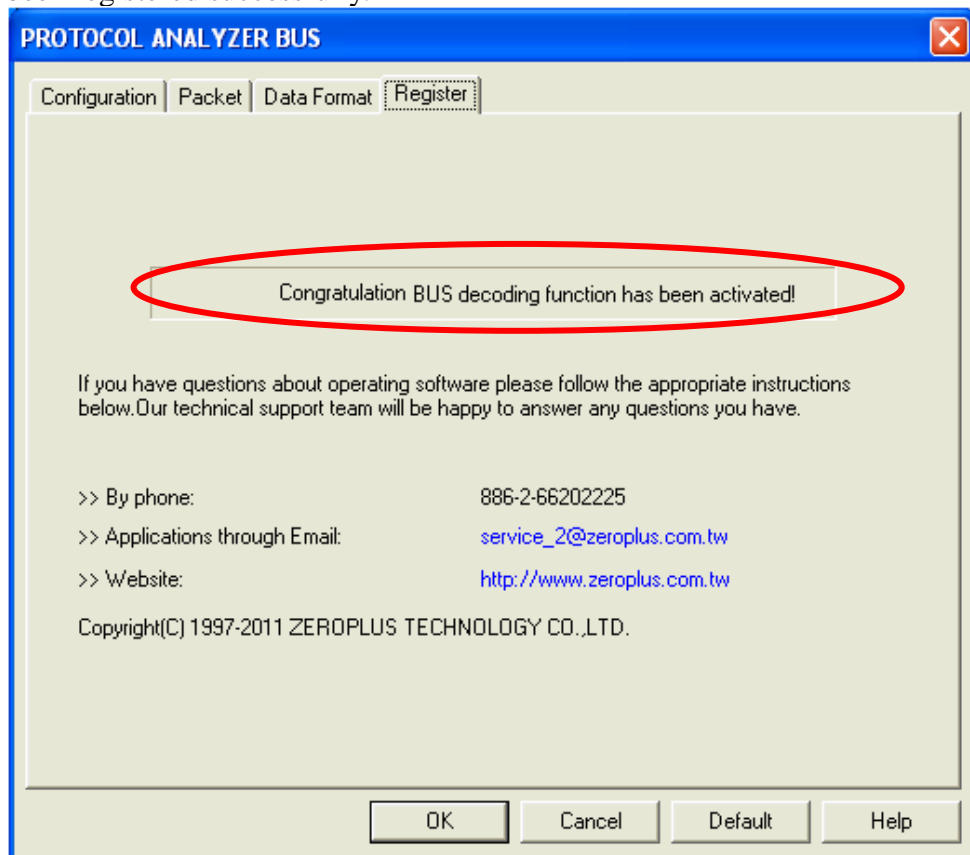


STEP 4. Press Register tab to type the serial key number of BUS. Then press Register.





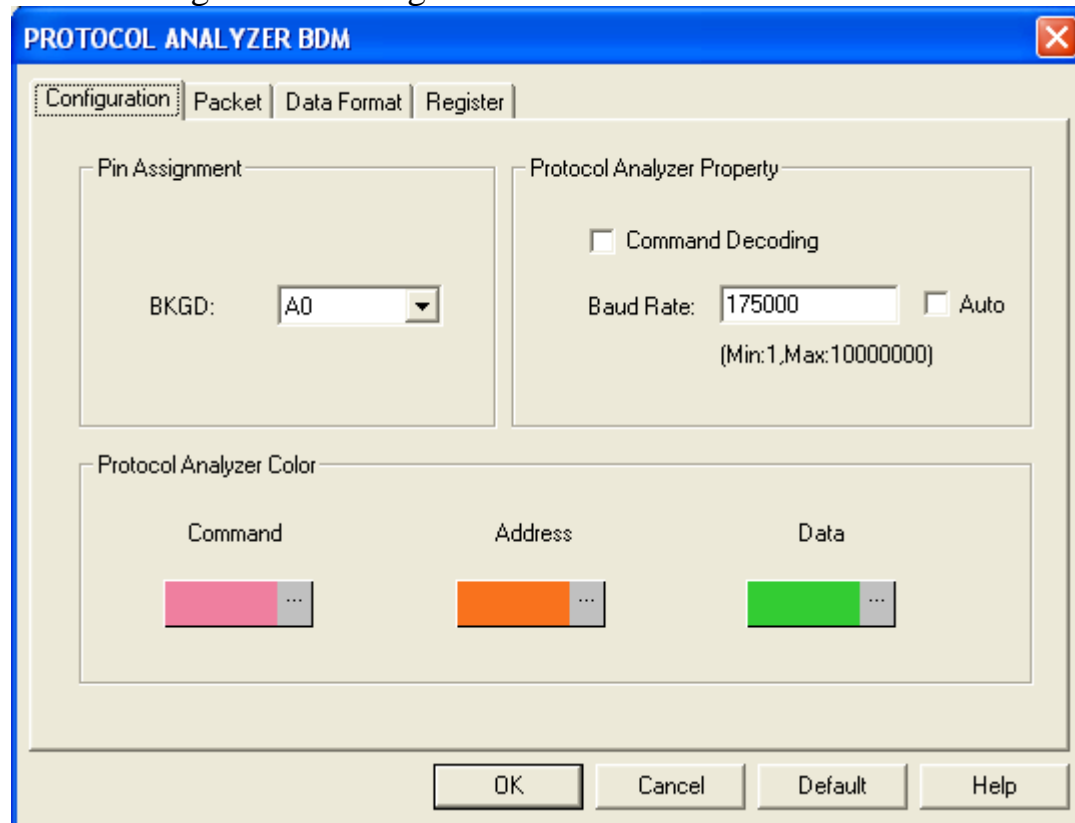
STEP 5. After pressing the Register button, following dialog box will appear, it denotes that the BUS has been registered successfully.



2 User Interface

In the configuration, please refer to the below images to select options of setting BDM module.

BDM Configuration Dialog Box



Pin Assignment:

BKGD: It is the Background Debug Mode channel.

Protocol Analyzer Settings:

Command Decoding: If this item is selected, the Protocol Analyzer will start to decode according to the Hardware Command or Firmware Command.

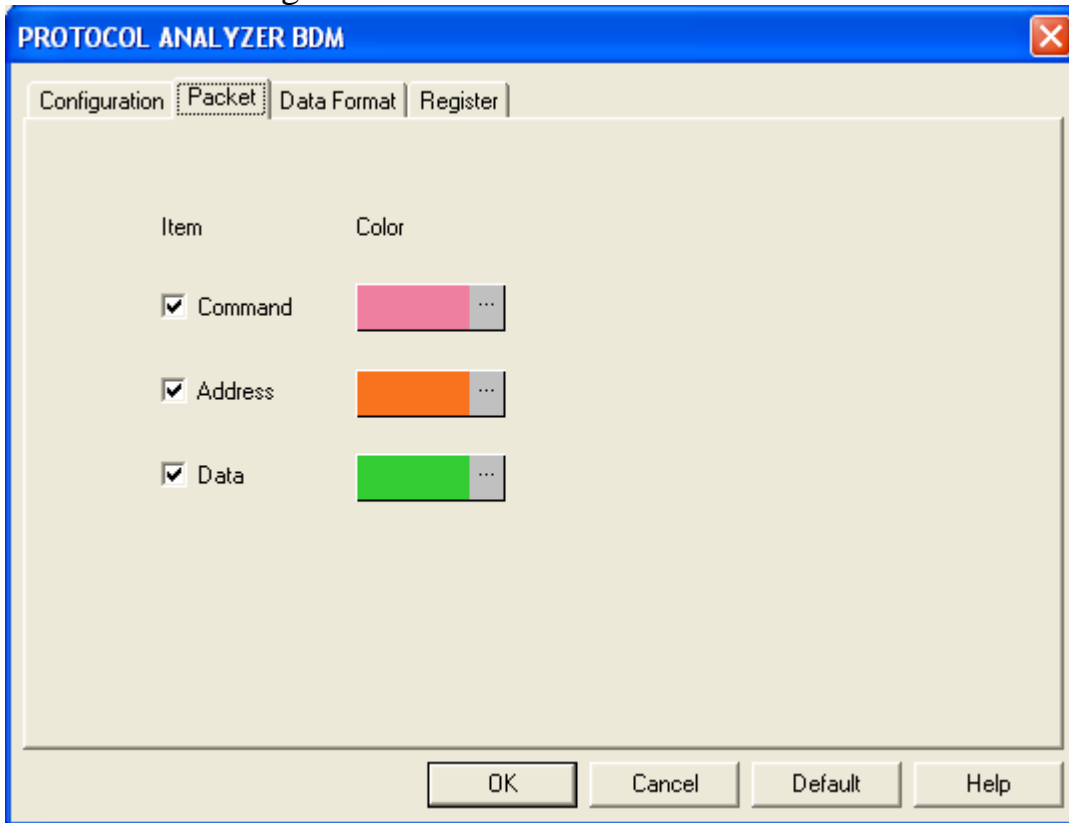
Baud Rate: According to the **Baud Rate**, the Protocol Analyzer can calculate the length of every Bit and set the data judgement point.

Auto: If this item is selected, the Protocol Analyzer will calculate the **Baud Rate** automatically according to the width between every falling edge.

Protocol Analyzer Color: The **Protocol Analyzer Color** can be varied by users.

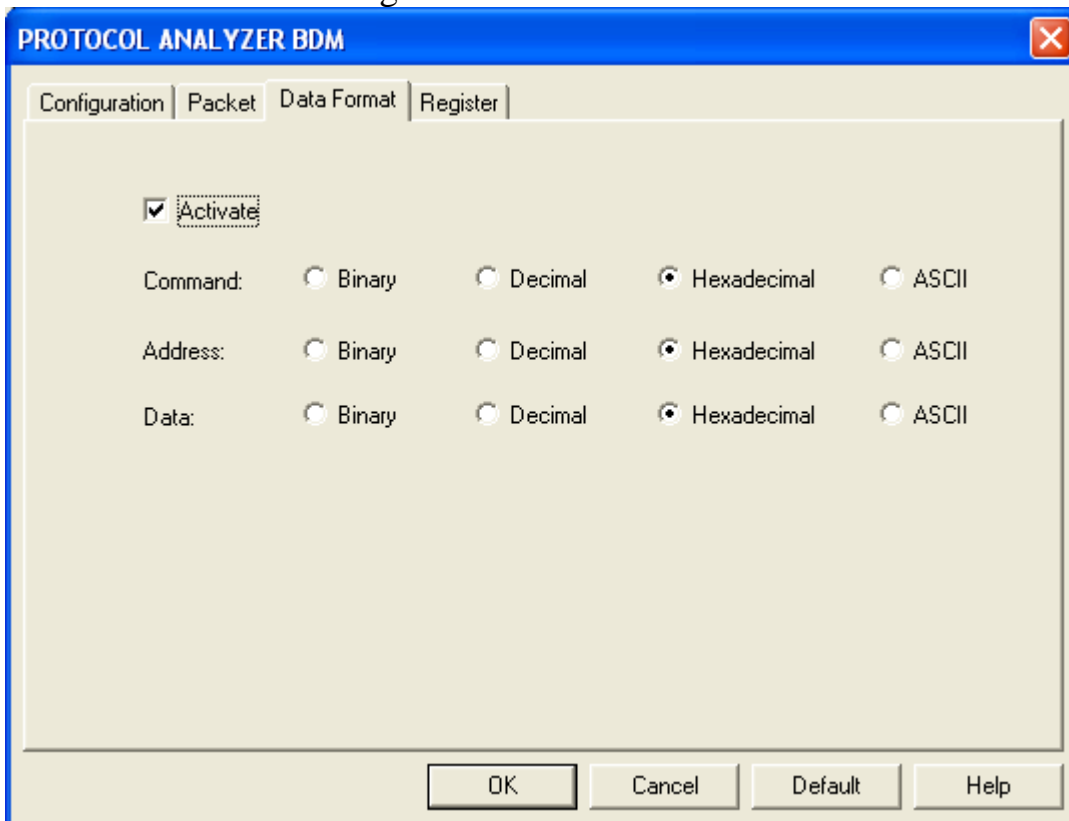


BDM Packet Dialog Box



In the Packet part, users can set the items and colors as users' requirements.

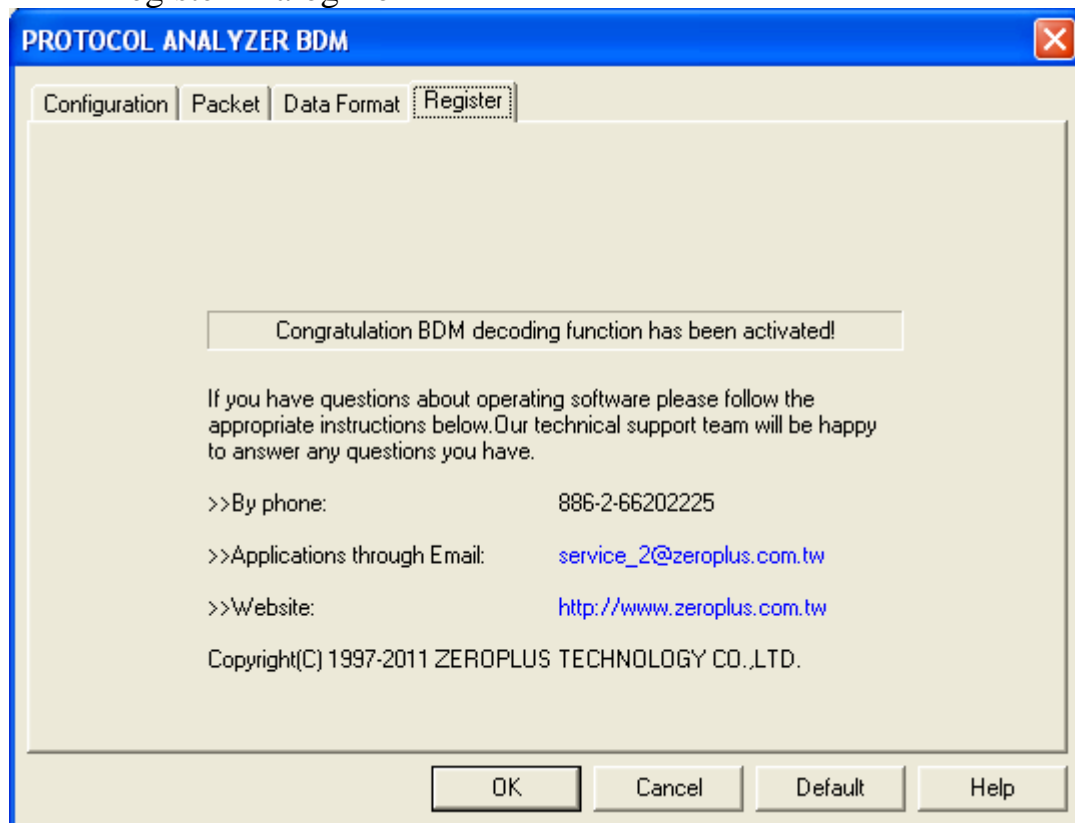
BDM Data Format Dialog Box



Users can set the Data Format of the Command, Address, and Data as their requirements. When selecting the option, Activate, the data formats are decided by the settings in the Protocol Analyzer; when not selecting the

option, Activate, the data formats are decided by the settings in the main program.

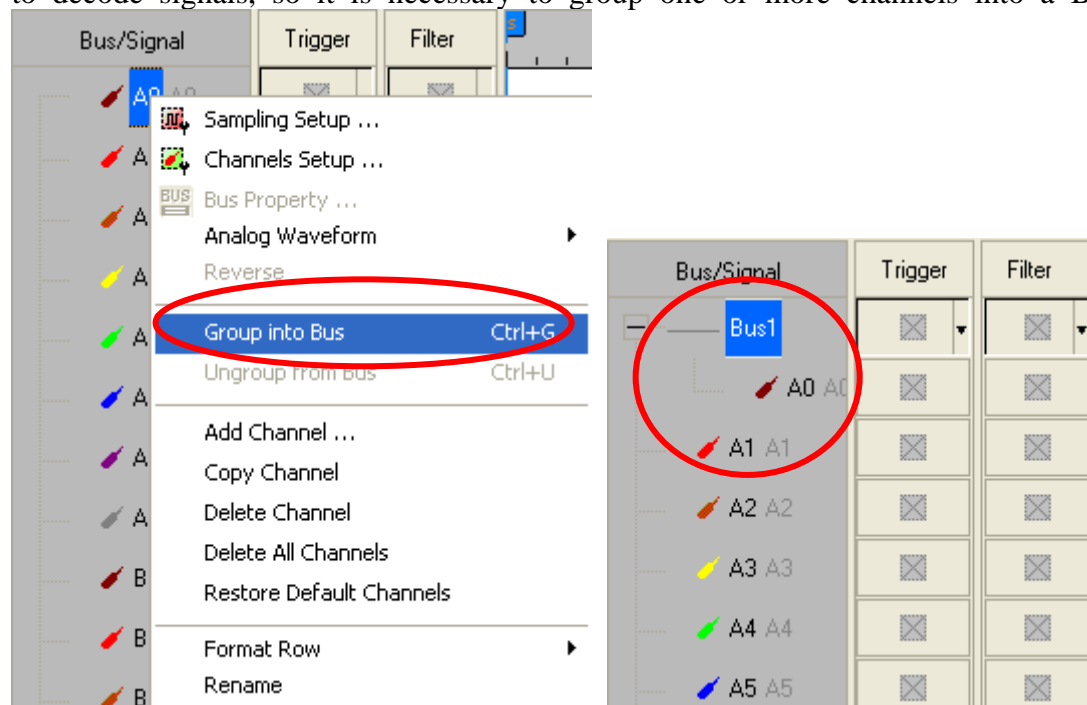
BDM Register Dialog Box



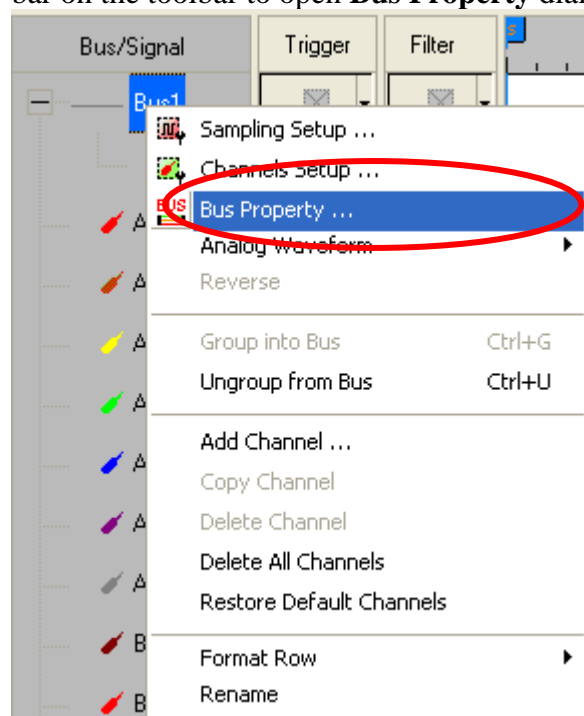
There is written ZeroPlus company information. If you have any questions about software operations, you can contact ZeroPlus by Telephone or Email.

3 Operating Instructions

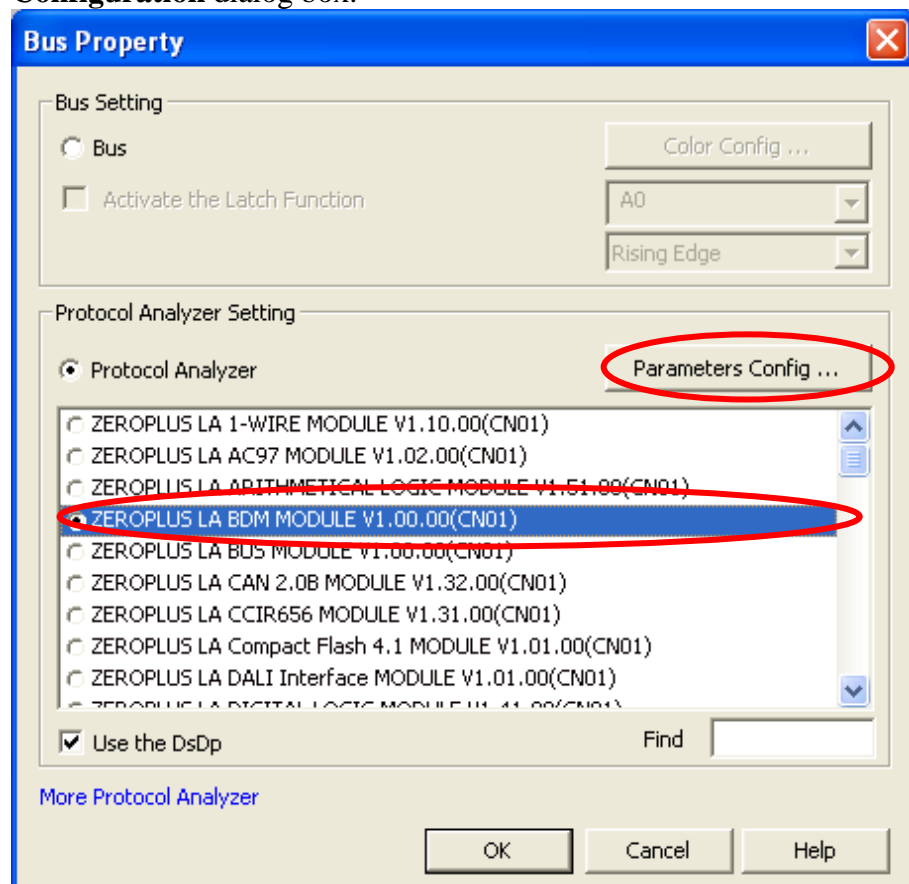
STEP 1. Group A0 into Bus1 by pressing the Right Key on the mouse. BDM needs one channel to decode signals, so it is necessary to group one or more channels into a Bus.



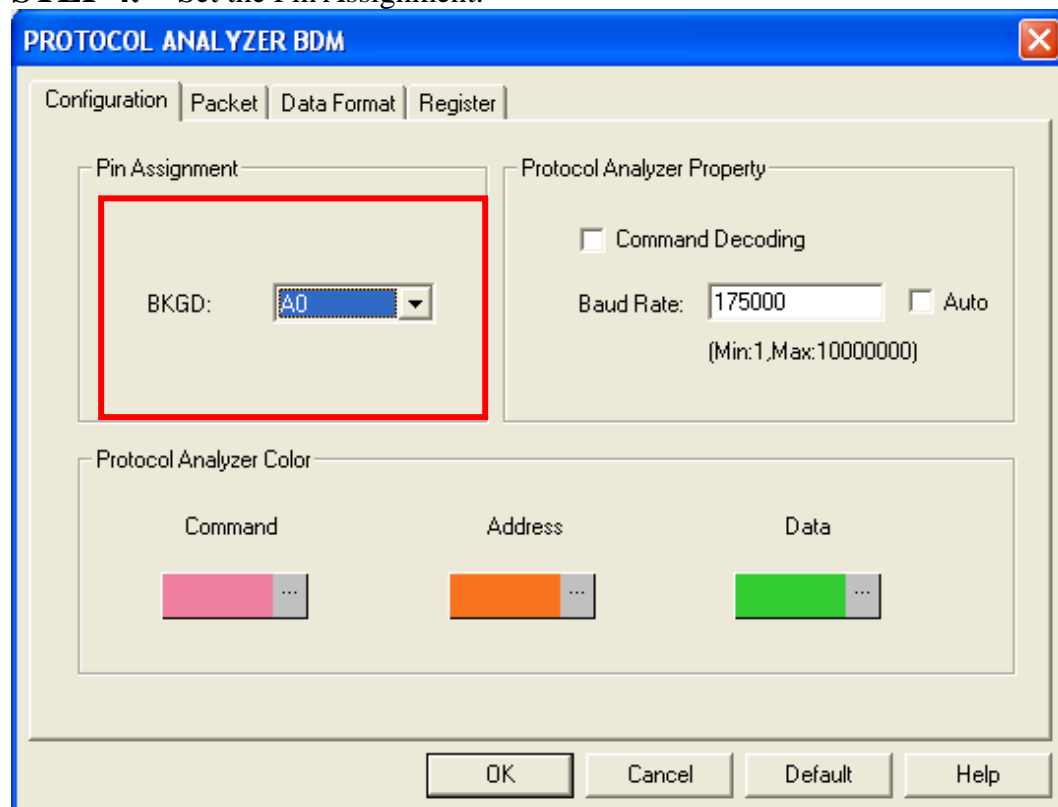
STEP 2. Select **Bus1**, and press **Right Key** on the mouse to list the menu, then press **Bus Property** or **Bus** bar on the toolbar to open **Bus Property** dialog box.



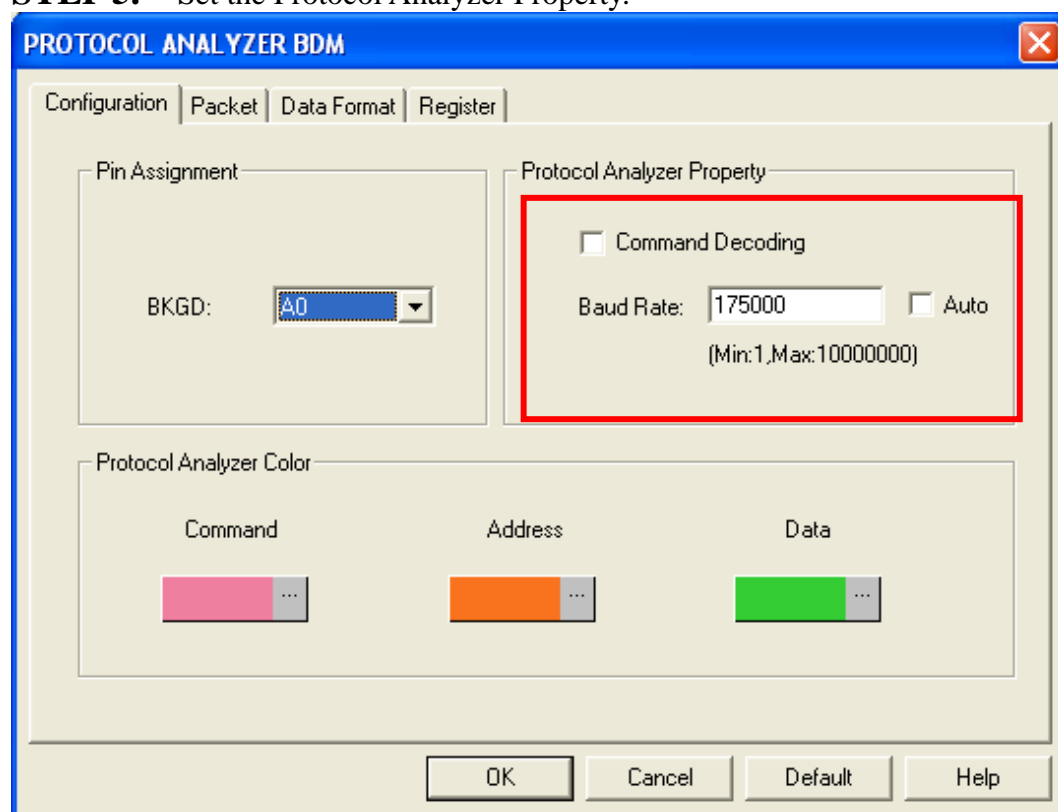
STEP 3. For Protocol Analyzer BDM Parameters Configuration, select Protocol Analyzer, and then choose **ZEROPLUS LA BDM MODULE V1.00.00 (CN01)**. Next click **Parameters Configuration** to open **Configuration** dialog box.



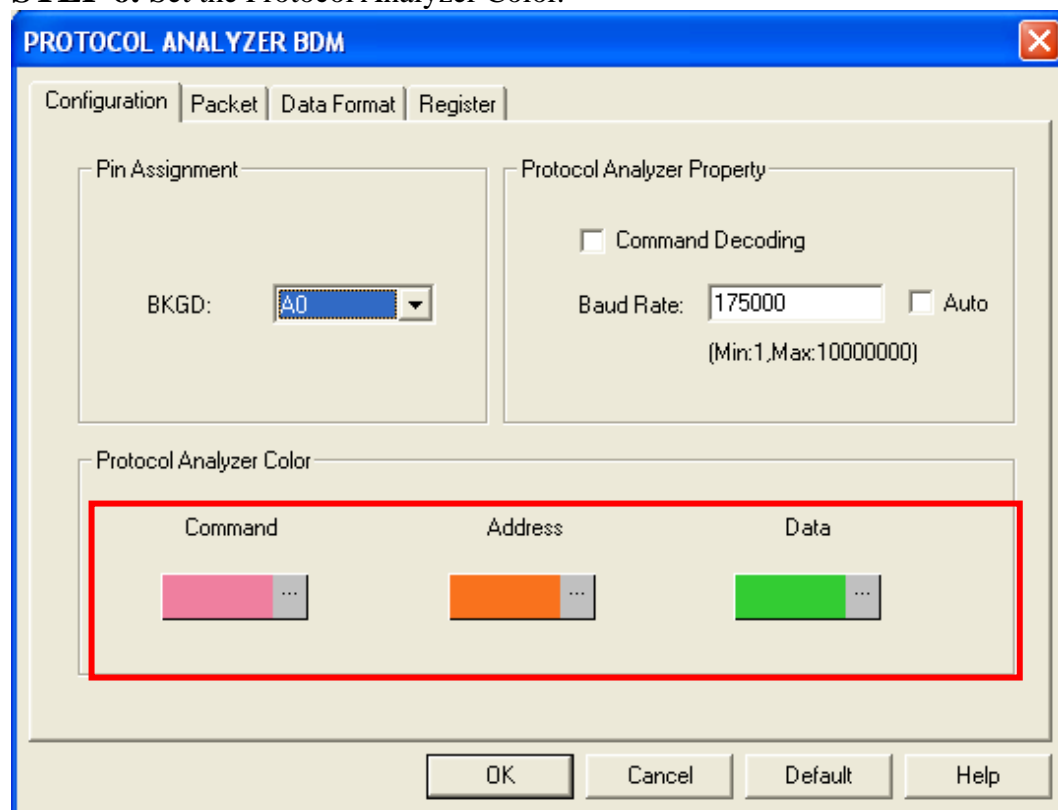
STEP 4. Set the Pin Assignment.



STEP 5. Set the Protocol Analyzer Property.



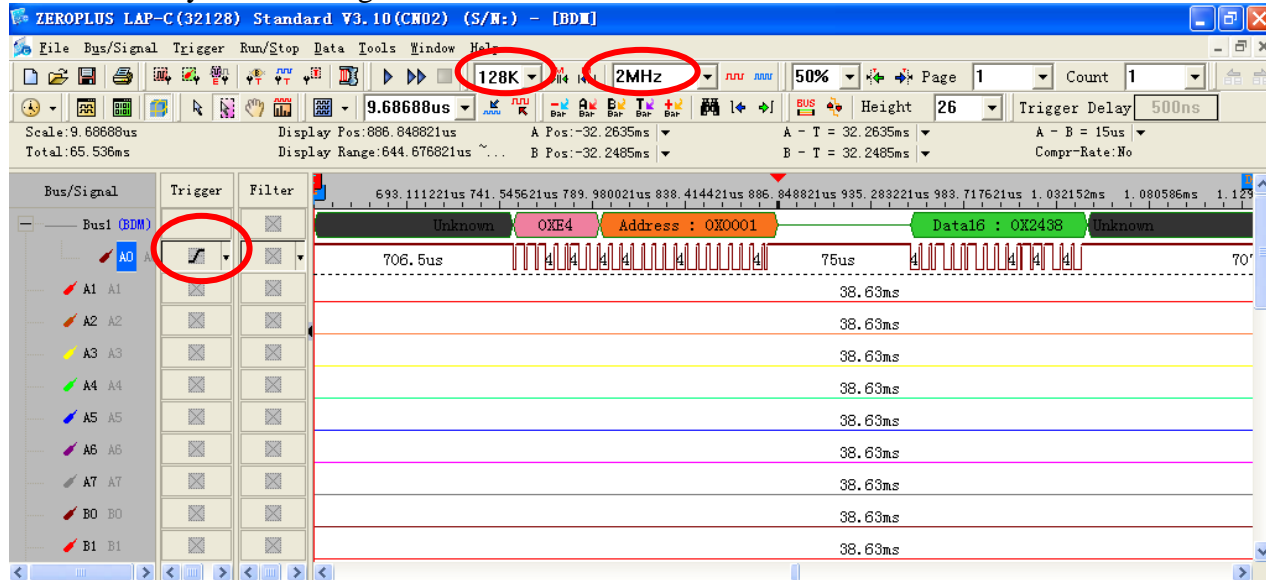
STEP 6. Set the Protocol Analyzer Color.





STEP 7. Following pictures show the completion of the protocol analyzer decoding and the packet list. The trigger condition is set as Rising Edge; the memory depth is 128K; the sampling frequency is 2MHz. (the sampling frequency should be more than eight times higher than the signal to be tested)

Protocol Analyzer Decoding



Packet List

